



On-line PICASSO PROJECT

**Comprehensive Catalogue Raisonné
Prof. Dr. Enrique Mallen**

1892



Course de taureaux (Corrida). A Coruña. 20-January/1892. Pencil & ink wash on paper [Obverse of *Chiens et chiots*]. 13 x 21 cm. The Picasso Estate.

OPP.92:009; PP.92:058; Z.XXI:2; MG.15*:51; RI.05:44p

Deux pigeons piles du nid et lapins pres d'une touffe de fleurs. A Coruña. 23-January/1892. Graphite pencil on paper [Reverse of *Courses de taureaux (Corrida)*]. 13 x 21 cm. Private collection.

OPP.92:008; P.I:14; PP.92:060; Z.XXI:4; JG.84*:2; MG.15*:53; WW.91:30p





Courses de taureaux (Corrida). A Coruña. 1892. Lead pencil & gouache [Obverse of *Deux pigeons piles du nid et lapins pres d'une touffe de fleurs*]. 13 x 21 cm. The Picasso Estate.

OPP.92:001; P.I:13; PP.92:061; Z.XXI:5; HC.88:7.24; JG.84*:2; JR.91:41p; MG.15*:53; WW.91:31p

Corrida. A Coruña. 1892 [1894]. Graphite pencil on paper. [42 x 16,3] 40,4 X 16,5 cm. Museu Picasso, Barcelona.

OPP.92:007; MPB:110.861; PP.92:002; MG.10a*:3; MG.15:134p





Le dernier taureau. A Coruña. 1892. Graphite pencil on paper. 13,5 x 20,2 cm. Museu Picasso, Barcelona. Donation 1970.

OPP.92:011; C:370; MPB:110.869r; PP.92:004; MG.15:134p; TO.97*:3b

Tête de chat. A Coruña. 1892. Lead pencil on paper. 16,4 x 20,2 cm. Museu Picasso, Barcelona. Donation 1970.

OPP.92:012; C:8; MPB:110.998; PP.92:055; LO.94*:n/a





Tête de chien et crucifixion. A Coruña. 1892.
Lead pencil on paper. 15,8 x 20 cm. Museu
Picasso, Barcelona. Donation 1970.

OPP.92:013; MPB:110.999; PP.92:056;
KY.95*:n/a; MA.23c:84p; MG.15*:41;
PA.92b*:n/a

Chiens et chiots. A Coruña. 1892. Ink on paper
[Reverse of *Course de taureaux (Corrida)*]. 13 x 21
cm. Museu Picasso, Barcelona.

OPP.92:014; MPB:42p; PP.92:059; Z.XXI:3;
NS.01:47



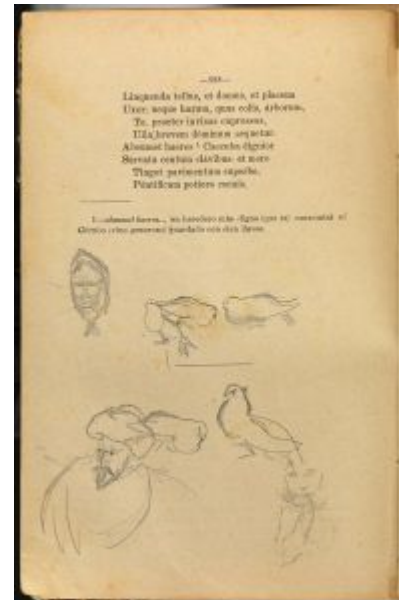


Marocain avec un fusil et études de têtes. A Coruña. 1892. Pencil & ink on page of book *Trozos Selectos Latinos y Castellanos*. 22,2 x 14 cm. Museu Picasso, Barcelona.

OPP.92:015; MPB:110.930.366; PP.92:053; NS.01:271

Figure féminine, Marocain et colombes. A Coruña. 1892. Pencil & ink on page of book *Trozos Selectos Latinos y Castellanos*. 22 x 14 cm. Museu Picasso, Barcelona.

OPP.92:016; C:378; MPB:110.930.228; PP.92:044; NS.01:272





Croquis divers: deux poules. A Coruña. 1892. Pencil on page of book *Trozos Selectos Latinos y Castellanos*. 22 x 14 cm. Museu Picasso, Barcelona.

OPP.92:018; MPB:110.930.224; PP.92:043

Franciscain priant et enfant. A Coruña. 1892. Graphite on paper. 31 x 21,1 cm. Museu Picasso, Barcelona. Donation 1970.

OPP.92:021; MPB:110.477; PP.92:001





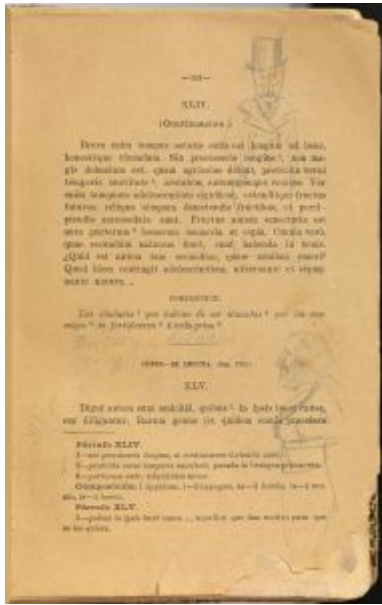
Deux croquis. A Coruña. 1892. Graphite on page of the book *Trozos Selectos Latinos y Castellanos*. 21,2 x 13,3 cm. Museu Picasso, Barcelona. Donation 1970.

OPP.92:022; MPB:110.930.130; PP.92:016

Croquis divers. A Coruña. 1892. Graphite on page of the book *Trozos Selectos Latinos y Castellanos*. 21,2 x 13,3 cm. Museu Picasso, Barcelona. Donation 1970.

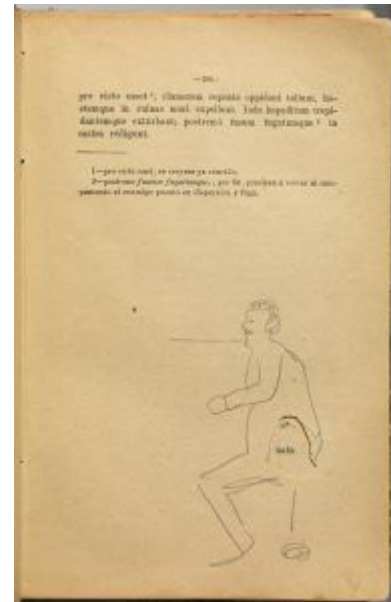
OPP.92:023; MPB:110.930.140; PP.92:022





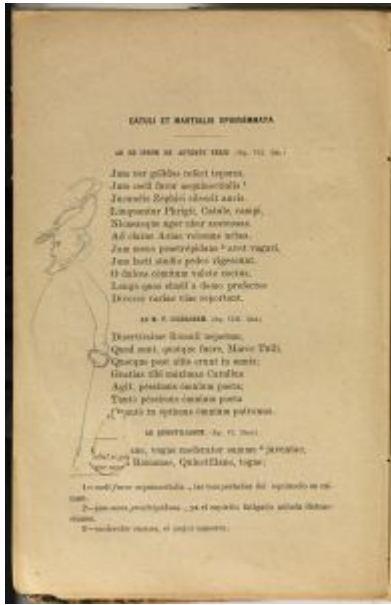
Deux croquis. A Coruña. 1892. Graphite on page of the book *Trozos Selectos Latinos y Castellanos*. 21,2 x 13,3 cm. Museu Picasso, Barcelona. Donation 1970.

OPP.92:024; MPB:110.930.153; PP.92:028



Croquis. A Coruña. 1892. Graphite on page of the book *Trozos Selectos Latinos y Castellanos*. 21,2 x 13,3 cm. Museu Picasso, Barcelona. Donation 1970.

OPP.92:025; MPB:110.930.201; PP.92:038

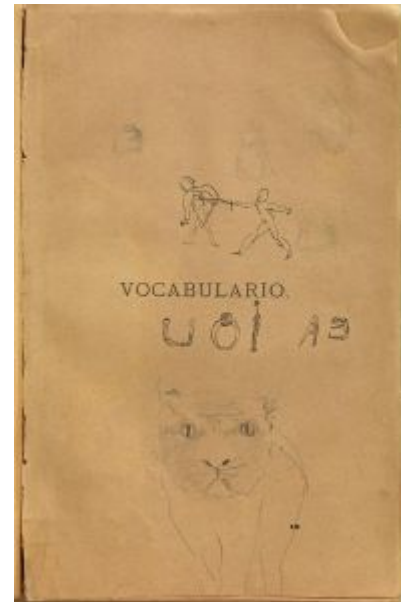


Étude de mousquetaire. A Coruña. 1892. Graphite on page of the book *Trozos Selectos Latinos y Castellanos*. 21,2 x 13,3 cm. Museu Picasso, Barcelona. Donation 1970.

OPP.92:026; MPB:110.930.202; PP.92:039

Croquis divers. A Coruña. 1892. Sepia ink & pen & graphite on page of the book *Trozos Selectos Latinos y Castellanos*. 21,2 x 13,3 cm. Museu Picasso, Barcelona. Donation 1970.

OPP.92:027; MPB:110.930.273; P.I:7; PP.92:051; CP.95:104p; GP.96:27p; NS.01:36; WW.91:30p





Scène de la passion du Christ. A Coruña. 1892.
Graphite on paper. 29,5 x 40 cm. Museu Picasso,
Barcelona. Donation 1970.

OPP.92:028; MPB:111.650; PP.92:057

Annotations. A Coruña. 1892. Ink on
cover of the book *Trozos Selectos Latinos y
Castellanos*. 22 x 14 cm. Museu Picasso,
Barcelona. Donation 1970.

OPP.92:030; MPB:110.930.c



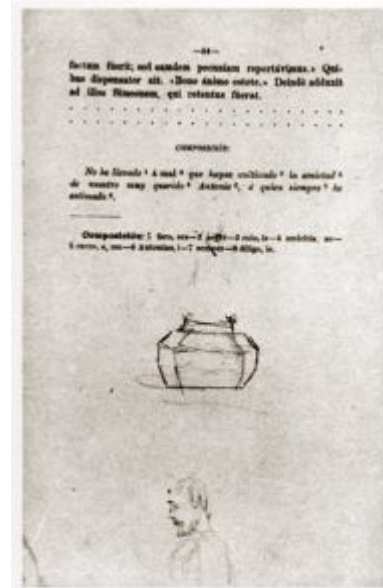


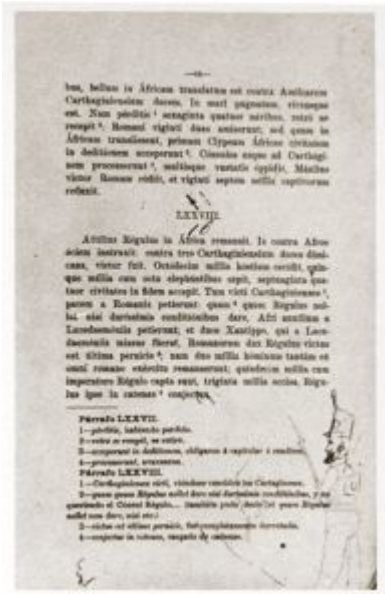
Croquis. A Coruña. 1892. Pencil on page of the book *Trozos Selectos Latinos y Castellanos*. 22 x 14 cm. Museu Picasso, Barcelona. Donation 1970.

OPP.92:031; MPB:110.930.029; PP.92:006

Croquis. A Coruña. 1892. Pencil on page of the book *Trozos Selectos Latinos y Castellanos*. 22 x 14 cm. Museu Picasso, Barcelona. Donation 1970.

OPP.92:032; MPB:110.930.054; PP.92:007





Croquis divers. A Coruña. 1892. Pencil & pen on page of the book Trozos Selectos Latinos y Castellanos. 22 x 14 cm. Museu Picasso, Barcelona. Donation 1970.

OPP.92:035; MPB:110.930.065; PP.92:010

Croquis. A Coruña. 1892. Pencil on page of the book Trozos Selectos Latinos y Castellanos. 22 x 14 cm. Museu Picasso, Barcelona. Donation 1970.

OPP.92:036; MPB:110.930.066; PP.92:011



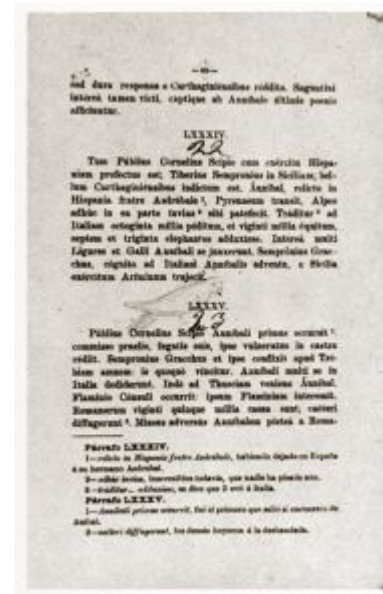


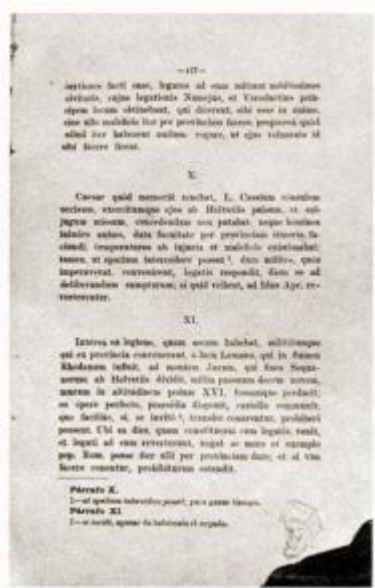
Croquis. A Coruña. 1892. Pencil on page of the book *Trozos Selectos Latinos y Castellanos*. 22 x 14 cm. Museu Picasso, Barcelona. Donation 1970.

OPP.92:037; MPB:110.930.067; PP.92:012

Croquis. A Coruña. 1892. Pencil on page of the book *Trozos Selectos Latinos y Castellanos*. 22 x 14 cm. Museu Picasso, Barcelona. Donation 1970.

OPP.92:038; MPB:110.930.069; PP.92:013



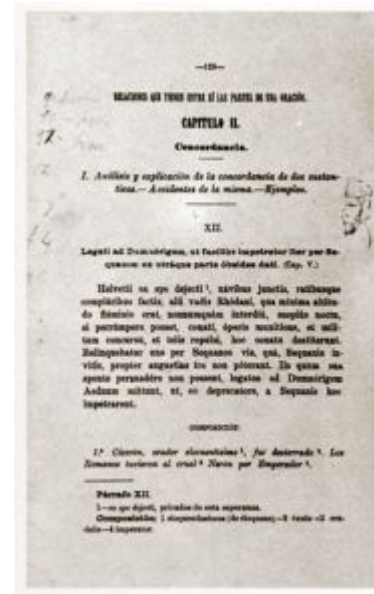


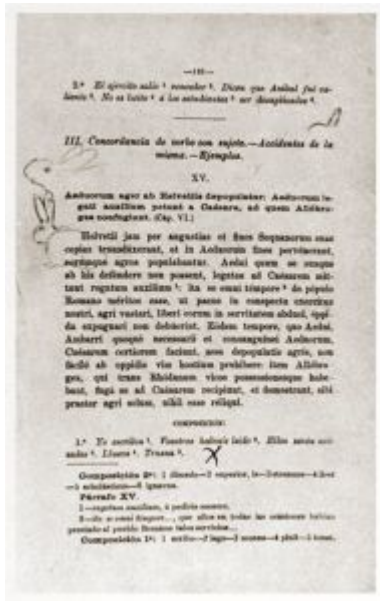
Croquis divers. A Coruña. 1892. Pencil on page of the book Trozos Selectos Latinos y Castellanos. 22 x 14 cm. Museu Picasso, Barcelona. Donation 1970.

OPP.92:039; MPB:110.930.127; PP.92:014

Croquis. A Coruña. 1892. Pencil on page of the book Trozos Selectos Latinos y Castellanos. 22 x 14 cm. Museu Picasso, Barcelona. Donation 1970.

OPP.92:040; MPB:110.930.128; PP.92:015





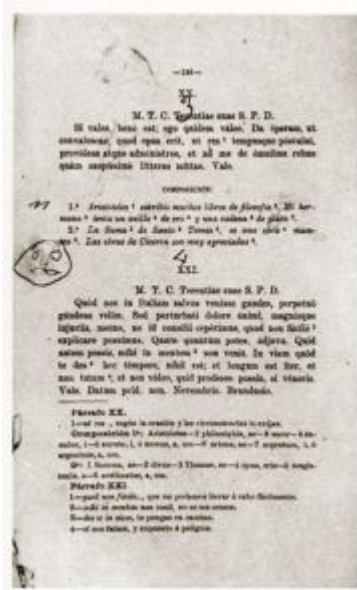
Croquis. A Coruña. 1892. Pencil on page of the book *Trozos Selectos Latinos y Castellanos*. 22 x 14 cm. Museu Picasso, Barcelona. Donation 1970.

OPP.92:041; MPB:110.930.131; PP.92:017

Croquis. A Coruña. 1892. Pencil on page of the book *Trozos Selectos Latinos y Castellanos*. 22 x 14 cm. Museu Picasso, Barcelona. Donation 1970.

OPP.92:042; MPB:110.930.132; PP.92:018



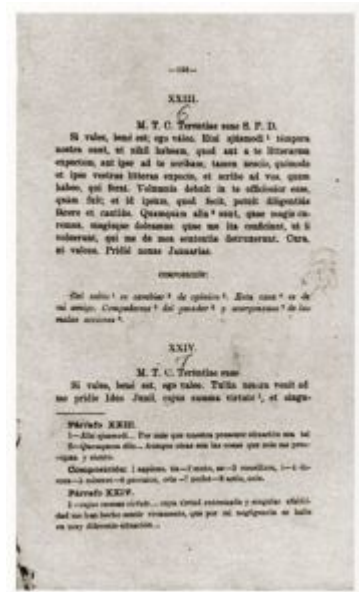


Croquis. A Coruña. 1892. Pencil on page of the book *Trozos Selectos Latinos y Castellanos*. 22 x 14 cm. Museu Picasso, Barcelona. Donation 1970.

OPP.92:043; MPB:110.930.136; PP.92:019

Croquis. A Coruña. 1892. Pencil on page of the book *Trozos Selectos Latinos y Castellanos*. 22 x 14 cm. Museu Picasso, Barcelona. Donation 1970.

OPP.92:044; MPB:110.930.138; PP.92:020



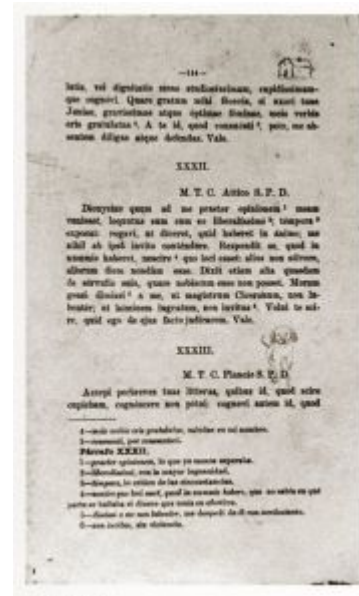


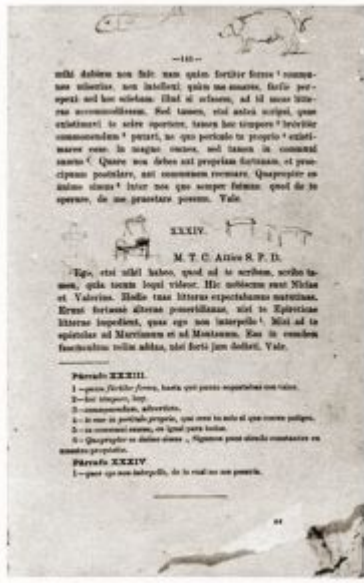
Croquis divers. A Coruña. 1892. Pencil on page of the book *Trozos Selectos Latinos y Castellanos*. 22 x 14 cm. Museu Picasso, Barcelona. Donation 1970.

OPP.92:045; MPB:110.930.139; PP.92:021

Croquis divers. A Coruña. 1892. Pencil on page of the book *Trozos Selectos Latinos y Castellanos*. 22 x 14 cm. Museu Picasso, Barcelona. Donation 1970.

OPP.92:046; MPB:110.930.144; PP.92:023



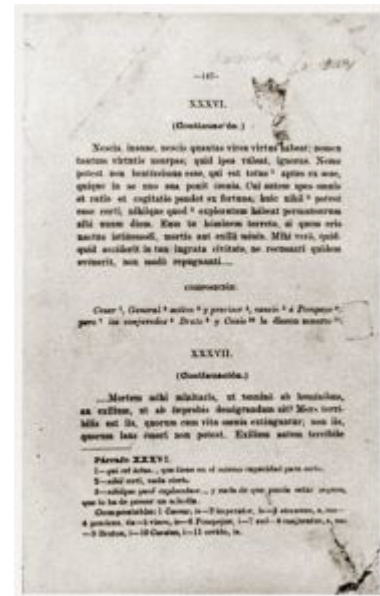


Croquis divers. A Coruña. 1892. Pencil on page of the book Trozos Selectos Latinos y Castellanos. 22 x 14 cm. Museu Picasso, Barcelona. Donation 1970.

OPP.92:047; MPB:110.930.145; PP.92:024

Caricature. A Coruña. 1892. Pencil on page of the book Trozos Selectos Latinos y Castellanos. 22 x 14 cm. Museu Picasso, Barcelona. Donation 1970.

OPP.92:048; MPB:110.930.147; PP.92:025





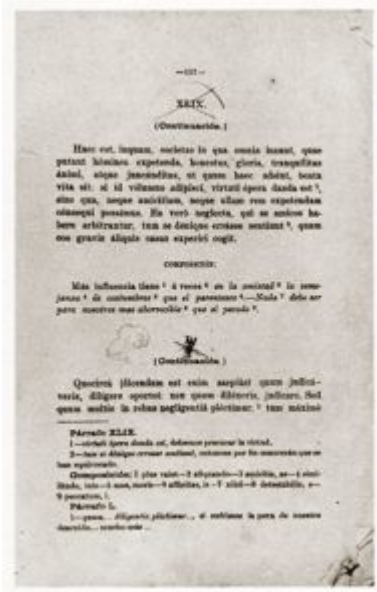
Croquis divers. A Coruña. 1892. Pencil on page of the book Trozos Selectos Latinos y Castellanos. 22 x 14 cm. Museu Picasso, Barcelona. Donation 1970.

OPP.92:049; MPB:110.930.149; PP.92:026

Croquis divers. A Coruña. 1892. Pencil on page of the book Trozos Selectos Latinos y Castellanos. 22 x 14 cm. Museu Picasso, Barcelona. Donation 1970.

OPP.92:050; MPB:110.930.151; PP.92:027



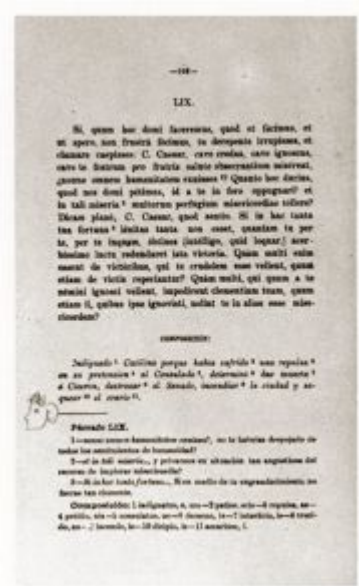


Croquis. A Coruña. 1892. Pencil on page of the book *Trozos Selectos Latinos y Castellanos*. 22 x 14 cm. Museu Picasso, Barcelona. Donation 1970.

OPP.92:051; MPB:110.930.157; PP.92:029

Croquis. A Coruña. 1892. Pencil on page of the book *Trozos Selectos Latinos y Castellanos*. 21 x 15 cm. Museu Picasso, Barcelona. Donation 1970.

OPP.92:052; MPB:110.930.168; PP.92:030





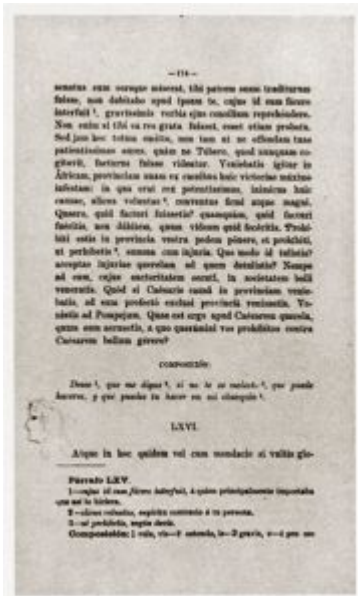
Croquis. A Coruña. 1892. Pencil on page of the book *Trozos Selectos Latinos y Castellanos*. 22 x 14 cm. Museu Picasso, Barcelona. Donation 1970.

OPP.92:053; MPB:110.930.170; PP.92:031

Croquis. A Coruña. 1892. Pencil on page of the book *Trozos Selectos Latinos y Castellanos*. 22 x 14 cm. Museu Picasso, Barcelona. Donation 1970.

OPP.92:054; MPB:110.930.172; PP.92:032





Croquis. A Coruña. 1892. Pencil on page of the book *Trozos Selectos Latinos y Castellanos*. 22 x 14 cm. Museu Picasso, Barcelona. Donation 1970.

OPP.92:055; MPB:110.930.174; PP.92:033

Deux croquis. A Coruña. 1892. Pencil on page of the book *Trozos Selectos Latinos y Castellanos*. 22 x 14 cm. Museu Picasso, Barcelona. Donation 1970.

OPP.92:056; MPB:110.930.176; PP.92:034



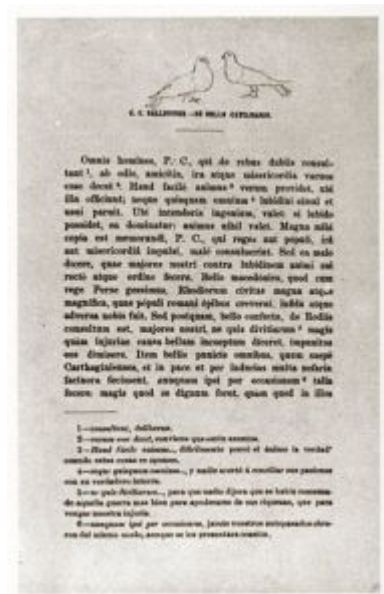


Croquis. A Coruña. 1892. Pencil on page of the book *Trozos Selectos Latinos y Castellanos*. 22 x 14 cm. Museu Picasso, Barcelona. Donation 1970.

OPP.92:057; MPB:110.930.182; PP.92:035

Deux colombes. A Coruña. 1892. Pencil on page of the book *Trozos Selectos Latinos y Castellanos*. 22 x 14 cm. Museu Picasso, Barcelona. Donation 1970.

OPP.92:058; MPB:110.930.183; PP.92:036





Croquis. A Coruña. 1892. Pencil on page of the book *Trozos Selectos Latinos y Castellanos*. 22 x 14 cm. Museu Picasso, Barcelona. Donation 1970.

OPP.92:059; MPB:110.930.197; PP.92:037

Deux croquis. A Coruña. 1892. Pencil on page of the book *Trozos Selectos Latinos y Castellanos*. 22 x 14 cm. Museu Picasso, Barcelona. Donation 1970.

OPP.92:060; MPB:110.930.204; PP.92:040





Croquis. A Coruña. 1892. Pencil on page of the book *Trozos Selectos Latinos y Castellanos*. 22 x 14 cm. Museu Picasso, Barcelona. Donation 1970.

OPP.92:061; MPB:110.930.207; PP.92:041

Croquis divers. A Coruña. 1892. Pencil on page of the book *Trozos Selectos Latinos y Castellanos*. 22 x 14 cm. Museu Picasso, Barcelona. Donation 1970.

OPP.92:062; MPB:110.930.216; PP.92:042



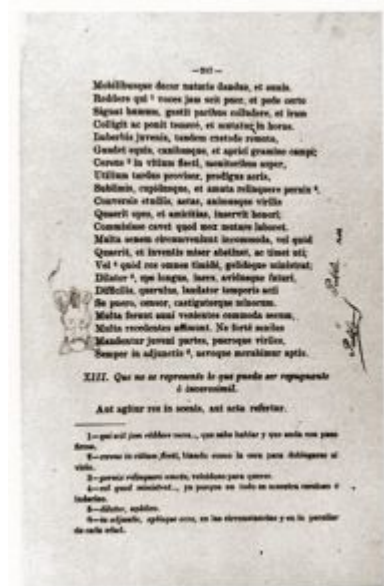


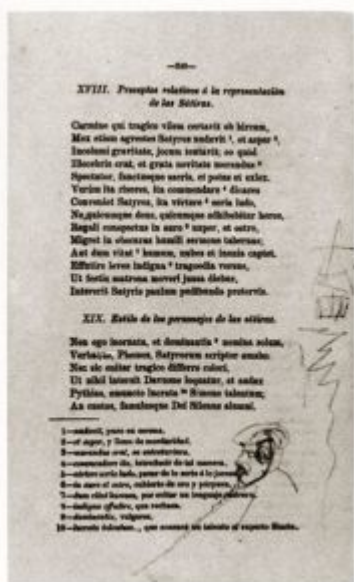
Croquis divers. A Coruña. 1892. Pencil on page of the book Trozos Selectos Latinos y Castellanos. 22 x 14 cm. Museu Picasso, Barcelona. Donation 1970.

OPP.92:063; MPB:110.930.229; PP.92:045

Caricature. A Coruña. 1892. Pencil on page of the book Trozos Selectos Latinos y Castellanos. 22 x 14 cm. Museu Picasso, Barcelona. Donation 1970.

OPP.92:064; MPB:110.930.237; PP.92:046





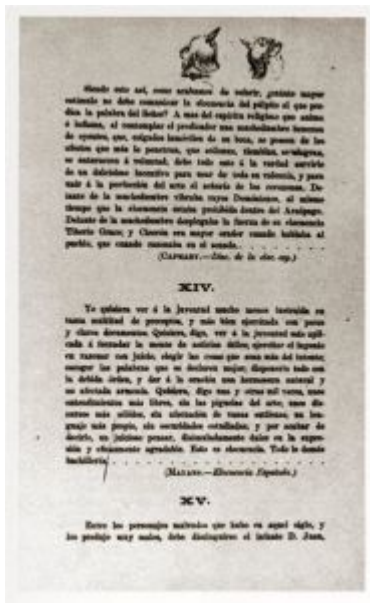
Buste de personnage masculin, de profil. A Coruña. 1892. Pencil on page of the book *Trozos Selectos Latinos y Castellanos*. 22 x 14 cm. Museu Picasso, Barcelona. Donation 1970.

OPP.92:065; MPB:110.930.240; PP.92:047

Croquis divers. A Coruña. 1892. Pencil on page of the book *Trozos Selectos Latinos y Castellanos*. 22 x 14 cm. Museu Picasso, Barcelona. Donation 1970.

OPP.92:066; MPB:110.930.251; PP.92:048





Deux croquis. A Coruña. 1892. Pencil on page of the book *Trozos Selectos Latinos y Castellanos*. 22 x 14 cm. Museu Picasso, Barcelona. Donation 1970.

OPP.92:067; MPB:110.930.265; PP.92:049

Croquis divers. A Coruña. 1892. Pencil on page of the book *Trozos Selectos Latinos y Castellanos*. 22 x 14 cm. Museu Picasso, Barcelona. Donation 1970.

OPP.92:068; MPB:110.930.272; PP.92:050





Buste de religieux, de profil. A Coruña. 1892. Pencil on page of the book *Trozos Selectos Latinos y Castellanos*. 22 x 14 cm. Museu Picasso, Barcelona. Donation 1970.

OPP.92:069; MPB:110.930.274; PP.92:052

Croquis. A Coruña. 1892. Pen on page of the book *Trozos Selectos Latinos y Castellanos*. 22 x 14 cm. Museu Picasso, Barcelona. Donation 1970.

OPP.92:070; MPB:110.930.368; PP.92:054





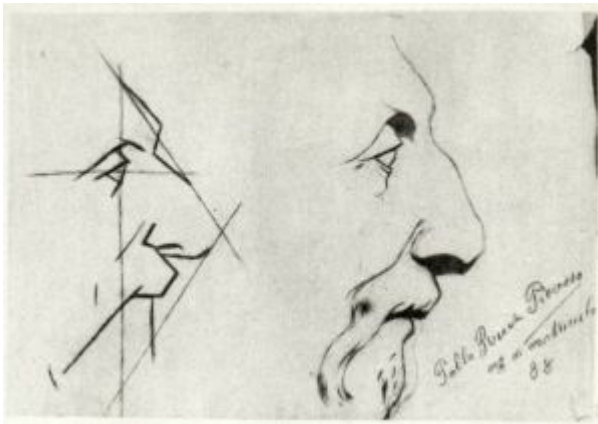
Étude académique. A Coruña. 1892~1893. Conté pencil & charcoal on laid paper. 31,3 x 24 cm. Museu Picasso, Barcelona. Donation 1970.

OPP.92:029; MPB:110.859r

Profil droit d'homme. A Coruña. 1892~1893. Conté pencil on paper. 36,5 x 26,5 cm. The Picasso Estate.

OPP.92:002; P.I:10; PP.9293:005; Z.VI:12;
MG.15:74p; PJ.02*:4





Profil droit de vieil homme. A Coruña. 1892~1893. [Conté pencil] Charcoal on paper. 24 x 31 cm. The Picasso Estate.

OPP.92:003; P.I:11; P.II:1; PP.9293:004;
Z.VI:10; EC.02:11; JR.91:44p; MG.15*:5;
NY.21g:46p; WW.91:32p

Torse. A Coruña. 1892~1893. Charcoal on paper [Obverse of *Quatre femmes qui pleurent et autres croquis*]. 61,2 x 47,5 cm. Museu Picasso, Barcelona.

OPP.92:004; MPB:110.592; PP.9293:001;
TO.97*:166b





Étude académique double de l'œil gauche. A Coruña. 1892~1893. Charcoal on laid paper. 24 x 31,6 cm. Museo Picasso, Málaga. Gift of Christine Ruiz-Picasso.

OPP.92:005; MPM:1.15.A; P.I:9; PP.9293:006; Z.VI:9; GM.11:4p; GS.03:1.43; MG.15*:7; MM.97*:5; MM.97:72p; NC.17*:1; NS.01:93; WW.91:32p

Étude pour un torse. A Coruña. 1892~1893 [1894~1895]. Charcoal & conté crayon on paper. 52,4 x 36,7 cm. Museu Picasso, Barcelona. Donation 1970.

OPP.92:006; MPB:110.894; PP.9293:003; EC.02:99; GD.11*:42; GM.11:62p; GT.81*:1; IC.05*:1; LA.16*:75p; MG.15*:3; NS.01:91; PJ.02*:2; SD.05:62p; TK.02*:n/a; TO.97*:11; WR.80*:21p





Étude académique. A Coruña. 1892~1893. Black pencil & charcoal on laid, ivory paper. 31,5 x 23,8 cm. Museu Picasso, Barcelona.

OPP.92:010; MPB:110.859; P.I:12; PP.9293:002; MG.15*:12; PJ.02*:3; TK.02*:n/a; TO.97*:10

'Dos políticos de vuelo'. A Coruña. 1892~1893. Illustration, Gaceta de Bellas Artes, no. 221 (1923). 31 x 22,5 cm. Real Academia Gallega, A Coruña.

OPP.92:019; MG.15*:78





'Congreso de Anarquistas'. A Coruña.
1892~1893. Illustration, Gaceta de Bellas Artes,
no. 221 (1923). 31 x 22,5 cm. Real Academia
Gallega, A Coruña.

OPP.92:020; MG.15*:80

Croquis: buste de personnage féminine. A Coruña. 1892.
Pencil on page of book Trozos Selectos Latinos y Castellanos.
22 x 14 cm. Museu Picasso, Barcelona. Donation 1970.

OPP.92:017; MPB:110.930.001; PP.92:005

